

PROVIDER PARTNERS



OUR MISSION

To be the best healthcare option for individuals and families, by providing quality healthcare benefits at affordable rates.

OUR VISION

To bring transparency, affordability, and compassion to healthcare.

OUR VALUES

*We believe in Transparency
We believe in Advocacy
We believe in Affordability
We believe in Compassion
We believe in Innovation*

We make it easy to join!

Complete our online application at
www.ovation.health/join-our-network



For questions, call 1-866-549-4199.

Ovation Health

22001 Northpark Drive, Suite 200
Kingwood, TX 77339

1-866-549-4199
www.ovation.health



Join our Direct Provider Network



► Get Paid FAST

As a contracted provider, you can get paid monthly. Ask us how!

► Gain More Patients

We always refer our members to contracted providers first.

► Receive Helpful Support

Person-to-person service with quick processing of authorizations and claims.

Through smart design, technology, and education, we are improving the interaction between providers and patients. We make it easy by providing amazing support, quick payments and robust medical coverage.

**Join with us today and help build
a better future for healthcare!**

1-866-549-4199
www.ovation.health

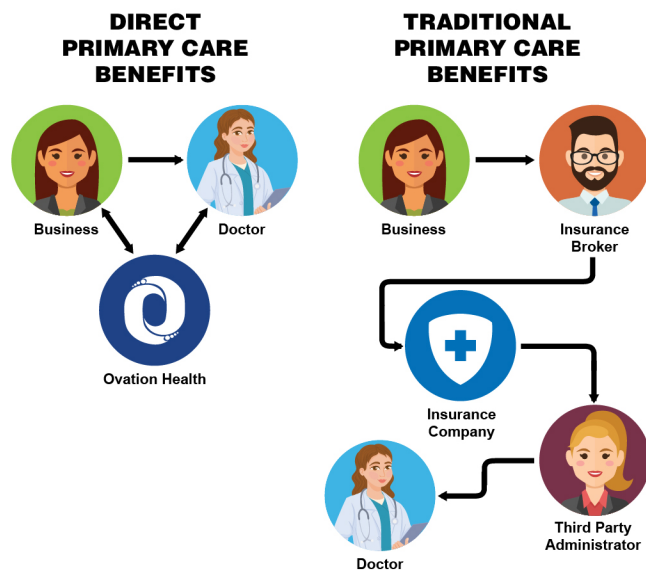
WHO WE ARE



Founded by physicians, our health plans were designed to provide quality health care at affordable rates.

Through innovative structuring, we lower costs by combining telemedicine, a robust pharmacy program, and a growing network of physicians. We do this by fixed rate direct contracting and expanding relationships with additional provider networks.

Why It Works



Because Ovation is so closely partnered with the TPA and we have agents that work with us, we are able to consolidate these elements. Consolidating improves efficiency, speed of payment, and transparency.

WHAT WE OFFER

Our aim is to make the health care process easier for our members and providers. We do that through tailored care options that ensure our members get the right care from the right provider, at the right time.

Our Members Receive

- **An Open Network**, enabling members to add their existing or preferred local providers.
- **National Telemedicine Networks**, enabling members to access medical care quickly in both urban and rural areas from the safety and comfort of their home.
- **No Copays for Primary Care, Labs and Imaging**, for all plan members using direct contracted providers.
- **A Care Team**, that provides our members with personal health care coordination and patient advocacy. Advocates also assist with negotiating and mitigating costs.
- **A Robust Pharmacy Program**, providing our members with at-pbm-cost medications.
- **Customized Plan Options**, enabling our members to choose from a wide range of provider partners with specialized health benefits.

OUR PLANS

Group plans may include dental and vision benefits, plus a variety of provider options and add-on benefits to customize health plans. And our self-insured and level-funded plans are re-insured to mitigate catastrophic events.

Ask about our individual health plans and how you can earn money monthly being the Primary Care provider for our association.

Group Plans Summary

PLATINUM PLAN	GOLD PLAN	HD PLAN
COINSURANCE	COINSURANCE	COINSURANCE
None	80% Plan; 20% Member	None
OUT-OF-POCKET LIMIT	OUT-OF-POCKET LIMIT	OUT-OF-POCKET LIMIT
Individual \$6,350 Per Family \$12,500	Individual \$7,900 Per Family \$15,000	Individual \$7,900 Per Family \$15,000
DEDUCTIBLE	DEDUCTIBLE	DEDUCTIBLE
Individual \$0 Per Family \$0	Individual \$2,500 Per Family \$5,000	Individual \$5,000 Per Family \$11,000
LIFETIME MAXIMUM	LIFETIME MAXIMUM	LIFETIME MAXIMUM
Unlimited	Unlimited	Unlimited
WELL PERSON ANNUAL EXAMS	WELL PERSON ANNUAL EXAMS	WELL PERSON ANNUAL EXAMS
Unlimited	Unlimited	Unlimited
Contracted Primary Care/Specialist - \$0 Primary Care Visits - \$25 Specialist Visits - \$25	Contracted Primary Care/Specialist - \$0 Primary Care Visits - \$25 Specialist Visits - \$25	Contracted Primary Care/Specialist - \$0 Primary Care Visits - \$25 Specialist Visits - \$25
DIAGNOSTIC IMAGING	DIAGNOSTIC IMAGING	DIAGNOSTIC IMAGING
Contracted Imaging Facility - \$0 Other - \$250	Contracted Imaging Facility - \$0 Other - \$250	Contracted Imaging Facility - \$0 Other - \$250
DIAGNOSTIC LABS	DIAGNOSTIC LABS	DIAGNOSTIC LABS
Contracted Imaging Facility - \$0 Other - \$50	Contracted Imaging Facility - \$0 Other - \$50	Contracted Imaging Facility - \$0 Other - \$50
EMERGENCY & URGENT MEDICAL CARE	EMERGENCY & URGENT MEDICAL CARE	EMERGENCY & URGENT MEDICAL CARE
ER/Hospitalization - \$500/day Ambulatory Surgical Centers - \$400 Urgent Care Clinic - \$75	ER/Hospitalization - \$500/day Ambulatory Surgical Centers - \$400 Urgent Care Clinic - \$75	ER/Hospitalization - \$500/day Ambulatory Surgical Centers - \$400 Urgent Care Clinic - \$75